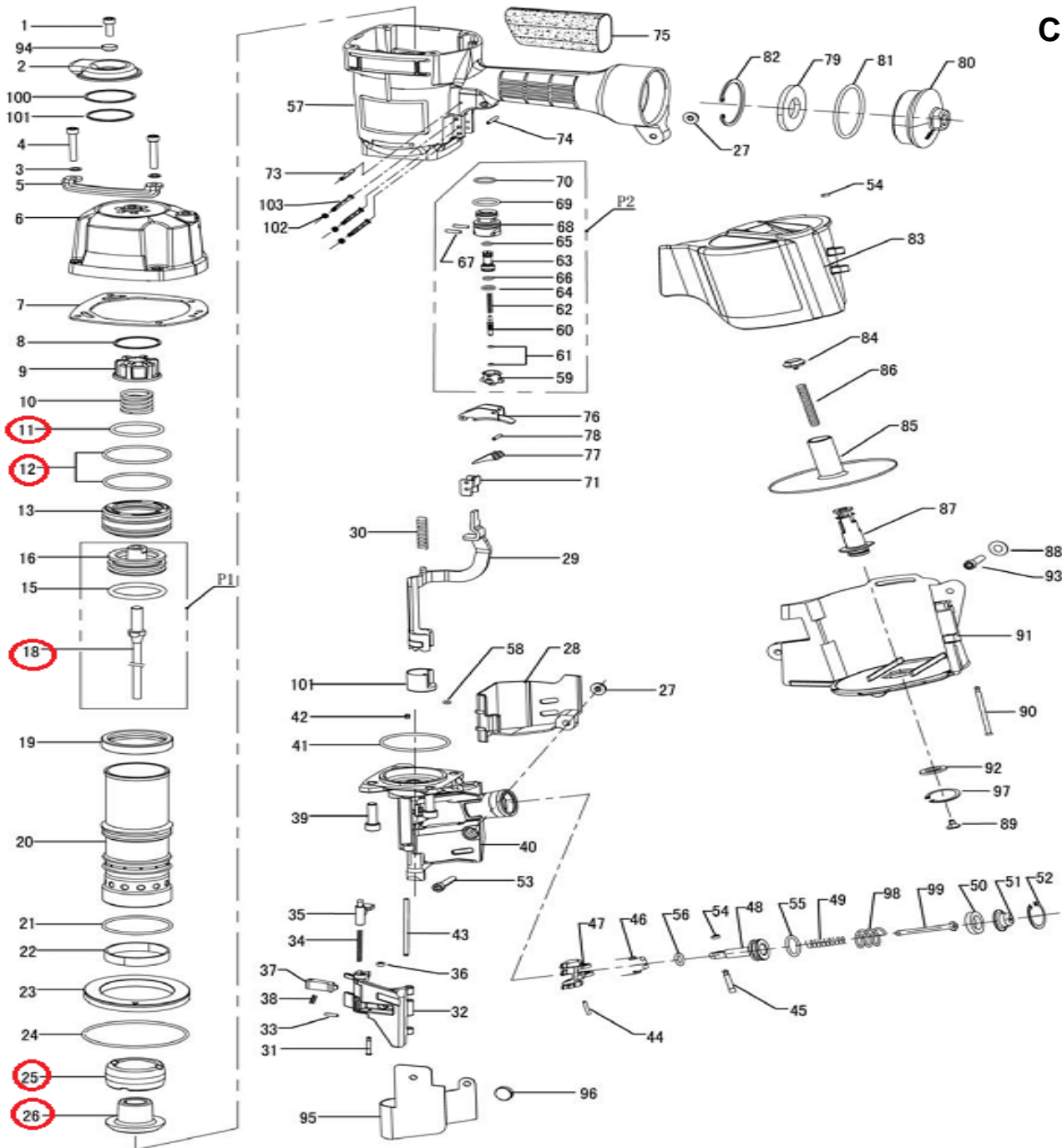


## DESPIECE DE LA HERRAMIENTA

Usted encontrará con un círculo las piezas de desgaste recomendadas para mantener en stock.



**CN80**

011: O'ring 012: O'ring 018: Lanceta 025: Tope A 026: Tope B

KIT: Un o'ring (011), dos o'rings (012), una lanceta (018), un tope A (025) y un tope B (026)

**Propiedad de: Implementos Neumáticos SA de CV**

**Prohibida la reproducción parcial o total**

Item	Part No.	Description	Q'ty	P. Lista
1	CN80-1	BOLT M8X20	1	17.18
2	CN80-2	EXHAUST COVER	1	57.29
3	CN80-3	SPRING WASHER	1	17.18
4	CN80-4	BOLT M6X35	1	17.18
5	CN80-5	SIDE PROTECTOR	1	45.83
6	CN80-6	CYLINDER CAP	1	744.79
7	CN80-7	GASKET	1	75.00
8	CN80-8	RING	1	17.18
9	CN80-9	PISTON STOP	1	206.25
10	CN80-10	COMPRESSION SPRING	1	22.92
11	CN80-11	O-RING 41.2X3.55	1	22.92
12	CN80-12	O-RING 56X2.65	1	22.92
13	CN80-13	HEAD VALVE PISTON	1	343.75
14	CN80-14	NOT APPLICABLE	1	-
15	CN80-15	O-RING 44X4.5	1	22.92
16	CN80-16	PISTON	1	181.25
17	CN80-17		1	-
18	CN80-18	DRIVER BLADE	1	1,088.54
19	CN80-19	CYLINDER SEALING RING	1	68.75
20	CN80-20	CYLINDER	1	1,088.54
21	CN80-21	O-RING 56X2.65	1	22.92
22	CN80-22	CYLINDER SEAL	1	34.38
23	CN80-23	CYLINDER RING	1	137.50
24	CN80-24	O-RING 90X3.05	1	29.17
25	CN80-25	BUMPER (A)	1	171.88
26	CN80-26	BUMPER (B)	1	171.88
27	CN80-27	NUT M6	1	17.18
28	CN80-28	GUARD COVER	1	52.08
29	CN80-29	SAFETY	1	326.04
30	CN80-30	SAFETY SPRING	1	17.71
31	CN80-31	CHECK PAWL PIN	1	17.71
32	CN80-32	DOOR	1	515.63
33	CN80-33	ROLL PIN 3X12	1	17.18
34	CN80-34	LATCH SPRING	1	17.18
35	CN80-35	LATCH	1	137.50
36	CN80-36	PIN CAP (B)	1	17.18
37	CN80-37	CHECK PAWL	1	171.88
38	CN80-38	CHECK PAWL SPRING	1	17.18
39	CN80-39	BOLT M8X25	1	17.18
40	CN80-40	NOSE	1	2,291.67
41	CN80-41	O-RING 50X1.8	1	17.18
42	CN80-42	PIN PLUG	1	17.18
43	CN80-43	DOOR PIN	1	17.71
44	CN80-44	ROLL PIN 3X16	1	17.18
45	CN80-45	FEED PAWL PIN	1	20.83
46	CN80-46	FEED SPRING	1	17.18
47	CN80-47	FEED PAWL	1	206.25
48	CN80-48	FEED PISTON	1	166.67
49	CN80-49	FEED PISTON SPRING (B)	1	17.18
50	CN80-50	FEED PISTON BUMPER	1	17.18
51	CN80-51	FEED PISTON CAP	1	17.18
52	CN80-52	SNAP RING	1	17.18
53	CN80-53	BOLT M6X35	1	17.18

Item	Part No.	Description	Q'ty	P. Lista
54	CN80-54	PIN CAP (A)	1	17.18
55	CN80-55	O-RING 20X2.65	1	17.18
56	CN80-56	O-RING 10X2.65	1	17.18
57	CN80-57	BODY	1	1,718.75
58	CN80-58	O-RING 3.75X1.8	1	17.18
59	CN80-59	TRIGGER VALVE CAP	1	29.17
60	CN80-60	TRIGGER STEM	1	57.29
61	CN80-61	O-RING 2.5X1.4	1	17.18
62	CN80-62	TRIGGER VALVE SPRING	1	17.18
63	CN80-63	TRIGGER VALVE BUSHING	1	57.29
64	CN80-64	O-RING 8.6X1.9	1	17.18
65	CN80-65	O-RING 5.8X1.9	1	17.18
66	CN80-66	O-RING 6.3X1.8	1	17.18
67	CN80-67	STRAIGHT PIN B3X15	1	17.18
68	CN80-68	TRIGGER VALVE CAGE	1	40.63
69	CN80-69	O-RING 18.3X2.65	1	17.18
70	CN80-70	O-RING 16X1.8	1	17.18
71	CN80-71	SAFETY BRACKET	1	29.17
72	CN80-72	Replaced by #102 #103	1	17.18
73	CN80-73	ROLL PIN 3X32	1	17.18
74	CN80-74	ROLL PIN 3X22	1	17.18
75	CN80-75	HANDLE GRIP	1	97.92
76	CN80-76	TRIGGER	1	45.83
77	CN80-77	CONTACT PLATE	1	17.18
78	CN80-78	ROLL PIN 3X16	1	17.18
79	CN80-79	FILTER	1	22.92
80	CN80-80	END CAP	1	229.17
81	CN80-81	O-RING 58X3.55	1	22.92
82	CN80-82	SNAP RING	1	17.18
83	CN80-83	MAGAZINE COVER	1	286.46
84	CN80-84	SPRING HOLDER (A)	1	17.18
85	CN80-85	NAIL SUPPORT PLATE	1	109.38
86	CN80-86	MAGAZINE SPRING	1	17.18
87	CN80-87	MAGAZINE POST	1	68.75
88	CN80-88	WASHER	1	17.18
89	CN80-89	SPRING HOLDER (B)	1	17.18
90	CN80-90	MAGAZINE PIN	1	17.71
91	CN80-91	MAGAZINE	1	401.04
92	CN80-92	PLASTIC WASHER	1	17.18
93	CN80-93	BOLT M6X40	1	17.18
94	CN80-94	SPRING WASHER	1	17.18
95	CN80-95	DUST COVER	1	57.29
96	CN80-96	RUBBER BUTTON	1	17.18
97	CN80-97	SNAP RING	1	17.18
98	CN80-98	FEED PISTON SPRING (A)	1	17.71
99	CN80-99	SPRING GUIDE	1	17.71
100	CN80-100	METAL WAHSER	1	22.92
101	CN80-101	PLASTIC WASHER	1	17.18
102	CN80-102	O-RING 1.5X1.8	1	17.18
103	CN80-103	STRAIGHT PIN	1	17.18
P1	CN80-P1	DRIVER UNIT	1	733.42
P2	CN80-P2	TRIGGER VALVE	1	238.54

\*Precios en moneda nacional