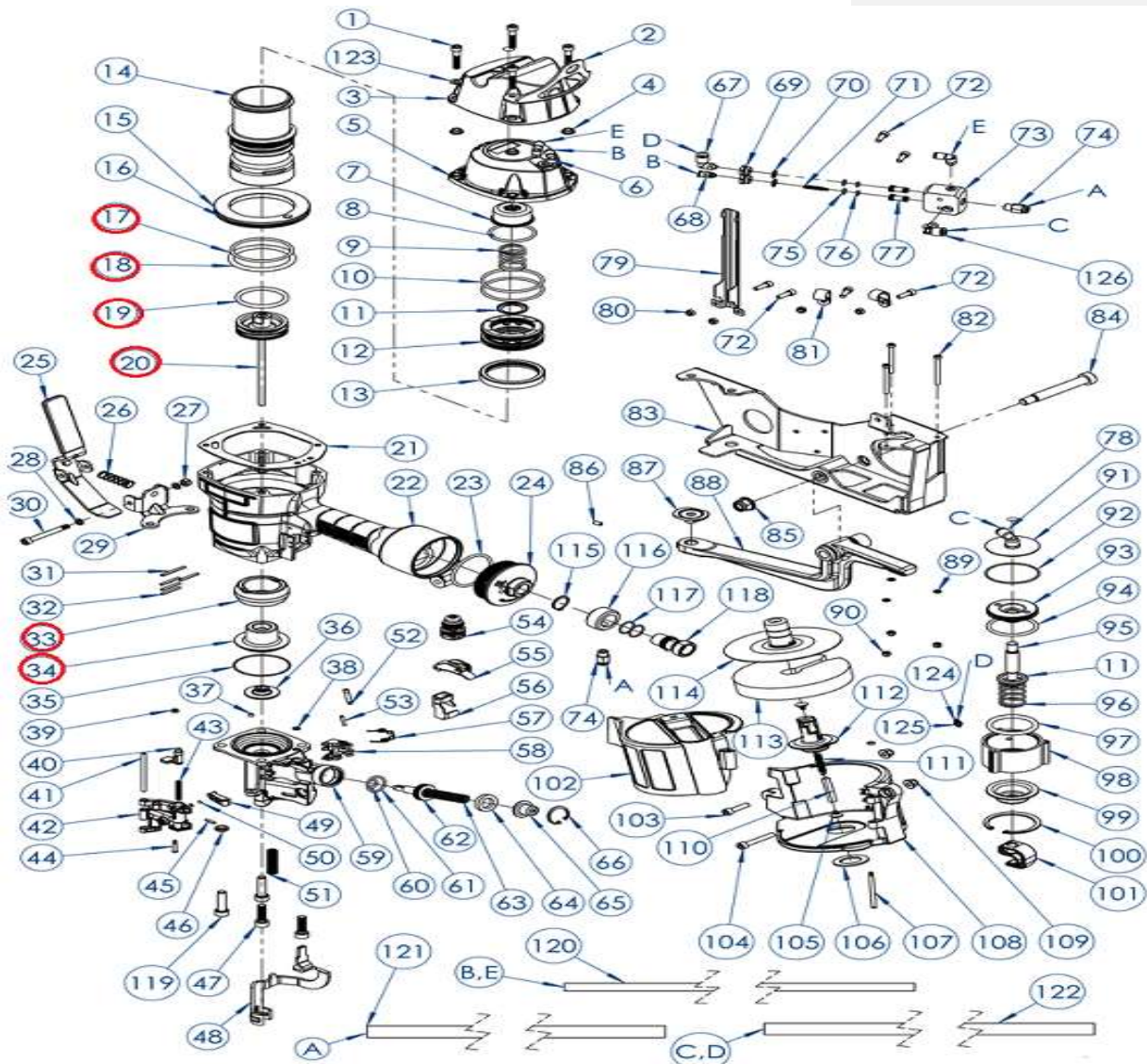


DESPIECE DE LA HERRAMIENTA

Usted encontrará con un círculo las piezas de desgaste recomendadas para mantener en stock.

PN70-CL



KIT: O'ring (17), o-ring (18), o-ring (19), Main piston unit una lanceta (20), bumper A (33), bumper B(34)

Propiedad de: Implementos Neumáticos SA de CV
Prohibida la reproducción parcial o total

LISTA DE PARTES
MODELO: PN70-CL

Item	Part No.	Descripción	Q'ty	P. Lista
1	PN70-CL-1	Screw Socket Hd M6*35	4	17.18
2	PN70-CL-2	TOOL HANGER- 70	1	437.50
3	PN70-CL-3	Cap Cover	1	264.58
4	PN70-CL-4	Bushing	4	63.54
5	PN70-CL-5	Cylinder Cap	1	1,218.75
6	PN70-CL-6	RCVA2 Coupler	3	180.21
7	PN70-CL-7	Piston Stop	1	127.08
8	PN70-CL-8	O-Ring	1	43.75
9	PN70-CL-9	Spring, Head Valve	1	61.46
10	PN70-CL-10	O-Ring	2	72.92
11	PN70-CL-11	Washer, Head Valve Spr	2	21.88
12	PN70-CL-12	Head Valve Piston	1	295.83
13	PN70-CL-13	Cylinder Seal	1	51.04
14	PN70-CL-14	Cylinder	1	1,077.08
15	PN70-CL-15	Cylinder Ring	1	135.42
16	PN70-CL-16	O-Ring	1	52.08
17	PN70-CL-17	O-Ring	1	28.13
18	PN70-CL-18	O-Ring	1	46.88
19	PN70-CL-19	O-Ring	1	55.21
20	PN70-CL-20	Main Piston Unit	1	1,791.67
21	PN70-CL-21	Cylinder Cap Seal	1	187.50
22	PN70-CL-22	Frame	1	2,519.79
23	PN70-CL-23	O-Ring	1	23.96
24	PN70-CL-24	End Cap	1	390.63
25	PN70-CL-25	Safety Handle	1	2,110.42
26	PN70-CL-26	Spring	1	17.71
27	PN70-CL-27	Nut M6	1	17.18
28	PN70-CL-28	Spring Washer	2	17.18
29	PN70-CL-29	Bracket	1	1,305.21
30	PN70-CL-30	Hex Soc Screw M6*55.2	1	38.54
31	PN70-CL-31	Roll Pin	1	17.18
32	PN70-CL-32	Roll Pin	4	17.18
33	PN70-CL-33	Bumper A	1	266.67
34	PN70-CL-34	Bumper B	1	277.08
35	PN70-CL-35	O-Ring	1	17.18
36	PN70-CL-36	Driver Guide	1	453.13

Item	Part No.	Descripción	Q'ty	P. Lista
65	PN70-CL-65	Spring Collar	1	40.63
66	PN70-CL-66	C-Ring	1	17.18
67	PN70-CL-67	Coupler	1	180.21
68	PN70-CL-68	RCVA1 Coupler	1	135.42
69	PN70-CL-69	Coupler	2	126.04
70	PN70-CL-70	O-Ring	2	17.18
71	PN70-CL-71	Spring	1	30.21
72	PN70-CL-72	Screw M5*14	6	17.18
73	PN70-CL-73	Manifold	1	1,290.63
74	PN70-CL-74	Coupler	2	144.79
75	PN70-CL-75	O-Ring	2	17.18
76	PN70-CL-76	O-Ring	2	17.18
77	PN70-CL-77	Actuation Stem	2	94.79
78	PN70-CL-78	Coupler	1	839.58
79	PN70-CL-79	Hose Cover	1	132.29
80	PN70-CL-80	Anchor Block Lock Nut	4	17.18
81	PN70-CL-81	Hose Clamp	2	17.18
82	PN70-CL-82	Hex.Soc.Hd.Bolt M4*50	3	17.18
83	PN70-CL-83	Main Bracket	1	7,298.96
84	PN70-CL-84	Screw M12*70	1	166.67
85	PN70-CL-85	Nut M10	1	17.18
86	PN70-CL-86	Screw Socket Hd M5*14	1	17.18
87	PN70-CL-87	Anvil	1	645.83
88	PN70-CL-88	Clinch Arm	1	3,334.38
89	PN70-CL-89	Washer	3	17.18
90	PN70-CL-90	Lock Nut	3	17.18
91	PN70-CL-91	Cylinder Cap	1	78.13
92	PN70-CL-92	O-Ring	1	17.18
93	PN70-CL-93	Piston	1	578.13
94	PN70-CL-94	O-Ring	1	21.88
95	PN70-CL-95	Connecting	1	233.33
96	PN70-CL-96	Spring, Cylinder	1	72.92
97	PN70-CL-97	O-Ring	1	29.17
98	PN70-CL-98	Cylinder	1	379.17
99	PN70-CL-99	Cylinder cover	1	132.29
100	PN70-CL-100	C-Ring	1	32.29

37	PN70-CL-37	O-Ring	1	17.18
38	PN70-CL-38	O-Ring	1	17.18
39	PN70-CL-39	Rubber Washer	3	17.18
40	PN70-CL-40	Door Latch	1	212.50
41	PN70-CL-41	Straight Pin	1	46.88
42	PN70-CL-42	Door	1	1,119.79
43	PN70-CL-43	Spring, Door Latch	1	17.18
44	PN70-CL-44	Step Pin	1	44.79
45	PN70-CL-45	Roll Pin	1	17.18
46	PN70-CL-46	Spacer	1	36.46
47	PN70-CL-47	Screw Socket Hd M8*28	2	17.18
48	PN70-CL-48	Contact Arm	1	562.50
49	PN70-CL-49	Check Pawl	1	212.50
50	PN70-CL-50	Compression Spring	1	20.83
51	PN70-CL-51	Spring, Contact Arm	1	26.04
52	PN70-CL-52	Step Pin	1	35.42
53	PN70-CL-53	Roll Pin	1	17.18
54	PN70-CL-54	Trigger Valve Unit (C.T)	1	522.92
55	PN70-CL-55	Trigger Unit (C.T)	1	87.50
56	PN70-CL-56	Contact Arm Guide	1	113.54
57	PN70-CL-57	Spring, Feed Pawl	1	40.63
58	PN70-CL-58	Feed Pawl	1	605.21
59	PN70-CL-59	Nose	1	6,197.92
60	PN70-CL-60	O-Ring	1	17.18
61	PN70-CL-61	O-Ring	1	17.18
62	PN70-CL-62	Feed Piston	1	527.08
63	PN70-CL-63	Spring, Feed Piston	1	21.88
64	PN70-CL-64	Feed Piston Stop	1	22.92

101	PN70-CL-101	Clinch Bracket	1	568.75
102	PN70-CL-102	Magazine Cover	1	351.04
103	PN70-CL-103	Screw Socket Hd M6*2	1	17.18
104	PN70-CL-104	Screw Socket Hd M6*4	1	17.18
105	PN70-CL-105	Receiver, Spring	2	17.18
106	PN70-CL-106	Rubber Washer	1	21.88
107	PN70-CL-107	Step Pin	1	67.71
108	PN70-CL-108	Magazine	1	789.58
109	PN70-CL-109	Nut, Elastic Stop M6	2	17.18
110	PN70-CL-110	Spacer	1	17.18
111	PN70-CL-111	Tension Spring	1	45.83
112	PN70-CL-112	Magazine Post	1	67.71
113	PN70-CL-113	Magazine Spacer	1	58.33
114	PN70-CL-114	Nail Support	1	502.08
115	PN70-CL-115	C-Ring	1	17.18
116	PN70-CL-116	Core tube	1	395.83
117	PN70-CL-117	O-Ring	2	17.18
118	PN70-CL-118	Patched Coupler	1	591.67
119	PN70-CL-119	Screw Socket Hd M8*3	2	17.18
120	PN70-CL-120	PU Hose B/E	2	17.71
121	PN70-CL-121	PU Hose	1	36.46
122	PN70-CL-122	PU Hose C/D	2	17.71
123	PN70-CL-123	Plain Washer	2	17.18
124	PN70-CL-124	Fittings	1	115.63
125	PN70-CL-125	O-Ring	1	17.18
126	PN70-CL-126	Coupler	1	162.50
127	PN70-CL-127	Washer M8	2	17.18