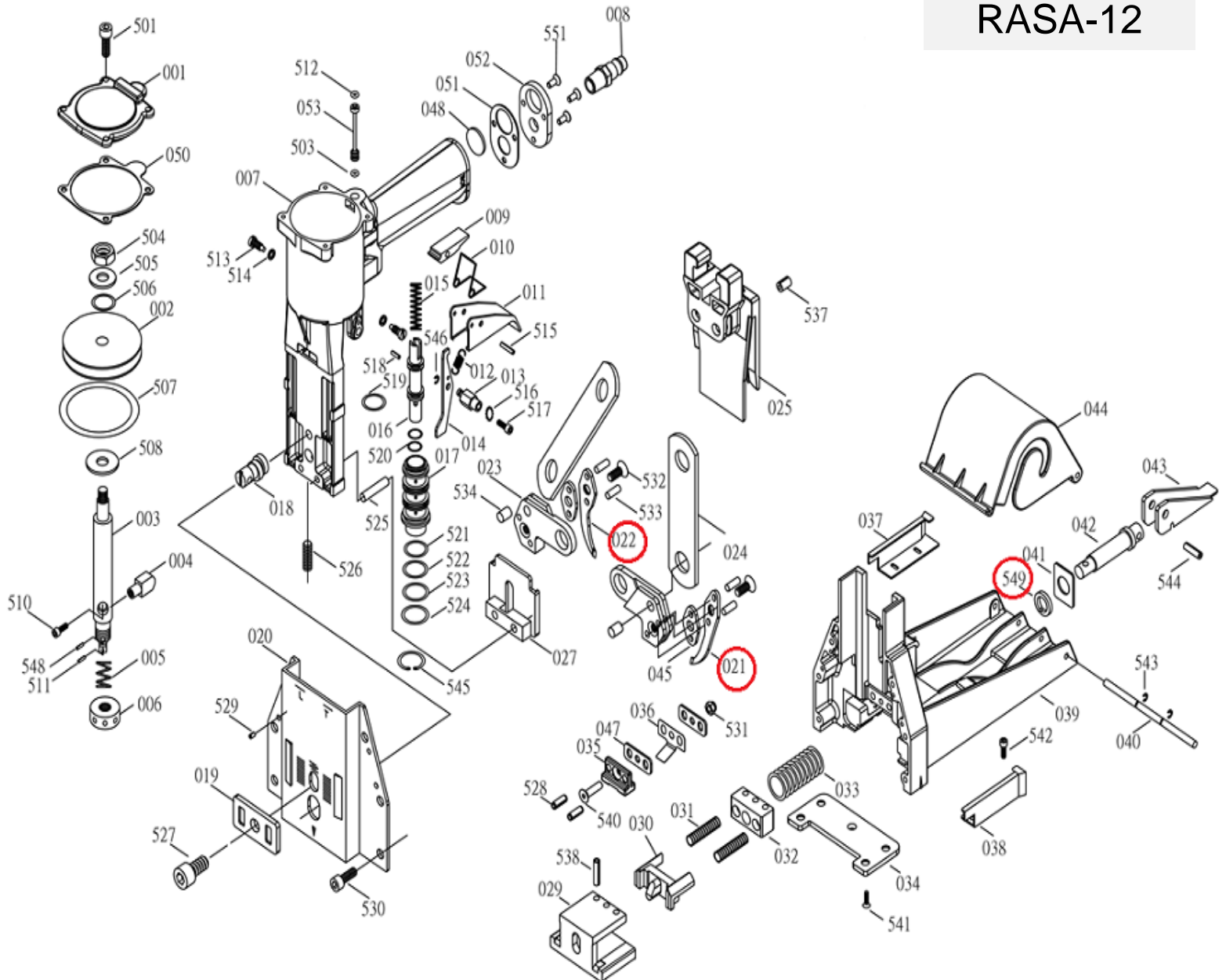


DESPIECE DE LA HERRAMIENTA

Usted encontrará con un círculo las piezas de desgaste recomendadas para mantener en stock.

RASA-12



021 Cuchilla derecha

022 Cuchilla izquierda

549 Arandela

KIT: Una cuchilla derecha (021), cuchilla izquierda (022) y arandela (549)

Propiedad de: Implementos Neumáticos SA de CV
Prohibida la reproducción parcial o total

LISTA DE PARTES
MODELO: RASA-12-15

Item	Part No.	Description	Q'ty	Specification	P. Lista
001	A01200113	CAP	1	NO MARK	354.17
002	A02800201	PISTON	1		251.04
003	A02800301	PISTON ROD	1		512.50
004	A00100401	BLOCK	1		117.71
005	A00100501	SPRING	1		17.18
006	A00100601	COLLAR	1		78.13
007	ADCSN-P31	BODY UNIT	1		4,485.42
008	A00100802	ESPIGA	1		56.25
009	A00100902	BLOCK	1		47.92
010	A00101001	SPRING	1		17.18
011	A00101101	TRIGGER	1		59.38
012	A00101201	SPRING	1		17.18
013	A00101301	ROD	1		46.88
014	A00101402	TRIGGER'S CONTROL	1		38.54
015	A00101501	SPRING	1		17.18
016	A00101601	VALVE	1		184.38
017	A00101702	TUBE	1		260.42
018	A00101801	ADJUSTING ROD	1		292.71
019	A00101901	ADJUSTING PLATE	1		43.75
020	A01102503	FRONT PLATE	1	22	218.75
021	A07600101	TEETH	1	S-12 series	170.83
022	A07600101	TEETH	1	S-12 series	170.83
023	A00102301	TEETH SEAT	2		317.71
024	A00102401	PLATE	2		38.54
025	A02202802	DRIVER	1		1,583.33
027	A02200202	DRIVER GUIDE UNIT	1	S series	425.00
029	A02200601	ANVIL	1	S series	441.67
030	A02200702	PUSHER	1	S series	383.33
031	A02201101	SPRING	2		43.75
032	A02200501	ANVIL CAP	1		233.33
033	A02201201	SPRING	1		66.67
034	A02200901	PLATE	1		191.67
035	A02202901	TOP GUIDE	1		260.42
036	A02201803	LEAF SPRING	1		33.33
037	A07600401	RIGHT COIL GUIDE	1	S-12 series	59.38
038	A07600501	LEFT COIL GUIDE	1	S-12 series	59.38
039	A02200110	MAGAZINE SEAT	1		1,375.00
040	A02201301	SHAFT	1		56.25
041	A02201903	WASHER	1		33.33
042	A02200801	SHAFT	1		158.33
043	A02201001	LEVER	1		100.00
044	A02201401	COVER	1		116.67
045	A02300801	PLATE	2		44.79
047	A02202402	WASHER	2		41.67
048	BA11401	SILENCER	1		52.08
050	A01202201	WASHER	1		104.17
051	A00106001	WASHER	1		78.13

Item	Part No.	Description	Q'ty	Specification	P. Lista
052	A00105801	COVER	1		62.50
053	A01202301	SHAFT	1		104.17
501	BAC0604142	HEX.SOC.HD.BOLT	4	M4 x 0.7-14	17.18
503	BAB017029	O-RING	1	ψ1.78 x ψ53.7	17.18
504	BAD02061	HEX.NUT	1	M6 x 1	17.18
505	BAE06094	WASHER	1	1/4" x 5/8" x 1T	17.18
506	BAB017076	O-RING	1	ψ1.78 x ψ7.65	17.18
507	BAB057476	O-RING	1	ψ5.7 x ψ47.6	29.17
508	A00104101	WASHER	1	ψ8 x ψ23 x 1.6T	17.18
509	BAE01042	SPRING WASHER	1	M4	17.18
510	BAC0404102	HEX.SOC.HD.BOLT	1	M4 x 0.7-6	17.18
511	BAA025014	SPRING PIN	1	ψ2.5-14	17.18
513	A00104401	TRIGGER SCREW	2	M4 x 0.7-7	30.21
514	BAE01042	SPRING WASHER	2	M4	17.18
515	BAA030020	SPRING PIN	1	ψ3-20	17.18
516	BAE02042	OUTSIDE TEETH WASHER	1	M4	17.18
517	BAC0404102	HEX.SOC.HD.BOLT	1	M4 x 0.7-10	17.18
518	BAA030010	SPRING PIN	1	ψ3-10	17.18
519	BAB017124	O-RING	1	ψ1.78 x ψ12.42	17.18
520	BAB017076	O-RING	2	ψ1.78 x ψ7.65	17.18
521	BAB016145	O-RING	1	ψ1.6 x ψ14.5	17.18
522	BAB016150	O-RING	1	ψ1.6 x ψ15	17.18
523	BAB016155	O-RING	1	ψ1.6 x ψ15.5	17.18
524	BAB016160	O-RING	1	ψ1.6 x ψ16	17.18
525	A00104702	ROD	2	ψ4.9-17.5	17.71
526	BAC0306142	HEX.SOC.HDLESS. BOLT	1	M6 x 1-14	17.18
527	BAC0608162	HEX.SOC.HD.BOLT	1	M8 x 1.25-16	17.18
528	BAA050014	SPRING WASHER	2	M8	17.18
529	BAA030010	SPRING PIN	4	ψ3-10	17.18
530	BAC0605142	HEX.SOC.HD.BOLT	6	M5 x 0.8-14	17.18
531	BAD01051	LOCK NUT	1	M5 x 0.8	17.18
532	BAC0205142	HEX.SOC.FLAT COUNTER SCREW	2	M5 x 0.8-14 S series	17.18
533	A00104501	PIN	4	ψ3.98-13	17.71
534	A00104602	PIN	2	ψ6.05-8	18.75
537	BAA060016-R	SPRING PIN	2	ψ6-16	28.13
538	BAA040022	SPRING PIN	3	ψ4-22	17.18
540	BAC0205202	HEX.SOC.HD.BOLT	1	M5 x 0.8-12	17.18
541	BAC0205082	HEX.SOC.FLAT COUNTER	4	M5 x 0.8-8	17.18
542	BAC0703063	ROUND HD.SCREW	4	M3 x 0.5-6	17.18
543	BAF10252	E-RING	2	ψ2.5	17.18
544	BAA040020	SPRING PIN	1	ψ4-20	17.18
545	BAF22002	C-RING	1	ψ20	17.18
546	BAF10252	E-RING	1	ψ2.5	17.18
548	A00104901	PLASTIC PIN	1		17.18
549	BAE03102	WAVE WASHER	1	ψ10	17.18
551	BAC0204122	HEX.SOC.FLAT COUNTER SCREW	1	M4 x 0.7-12	17.18

*Precios en moneda nacional